

NICOLE EXPLAINS IT ALL

Inside the Mind of the Techno-Mage
Where technology & art merge with the science of spirituality.

```
def manifest_intent(goal):  
    syntax = compile_ritual(goal)  
    execute(syntax)  
    return output
```

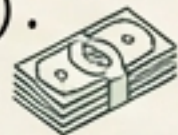


Nicole L. Tate, PMP



Architect of Scale:

Lead PM for Warner Bros. DC Universe OTT launch (Titans, Harley Quinn). Managed \$10M+ budgets.



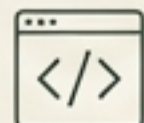
Revenue Engine:

Managed \$20M/month ad revenue content syndication ecosystem at Xumo TV across 460 FAST channels.



Systems Thinker:

Elite Agile methodologies, ML student, custom AI app developer.



The Preppy Goth Creole Witch



Lineage:

Pasadena native, descended from the historic LaBranche family of New Orleans.



Community Advocate:

Mental Health Ambassador for the LA County Department of Mental Health.



Esoteric Practitioner:

Researcher of Hermeticism, Christian Witchcraft, and Tarot; physical and digital artist.



I treat these not as two separate lives, but as two lenses for decoding the same universe.

The Core Thesis: Technomancy

Technomancy (n) — The magical practice of using technology to manipulate reality; the belief that digital circuits and spiritual currents are compatible.



1. Intention (The Goal):

The desired output or manifestation.

2. The Ritual (Syntax):

The strict grammar required by the system.

3. The Incantation (Execution):

Hitting Run / casting the spell.

4. Manifestation (Output):

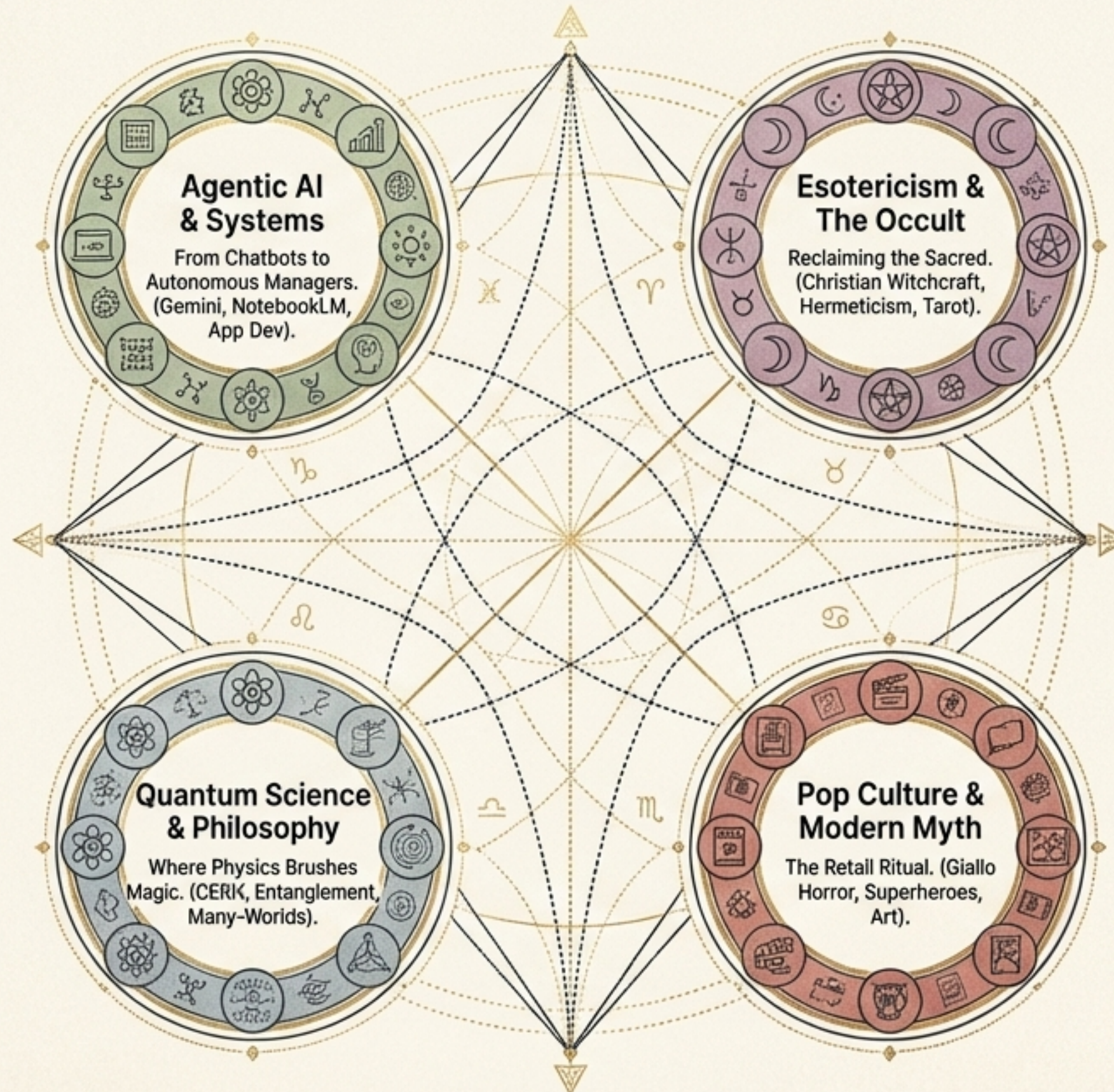
The change in reality.

>_

_ □ ×

> When I write Python scripts, I am effectively casting a sigil of logic to manifest a specific outcome. The computer is the altar; the code is the incantation.

The Architecture of the Silicon Altar



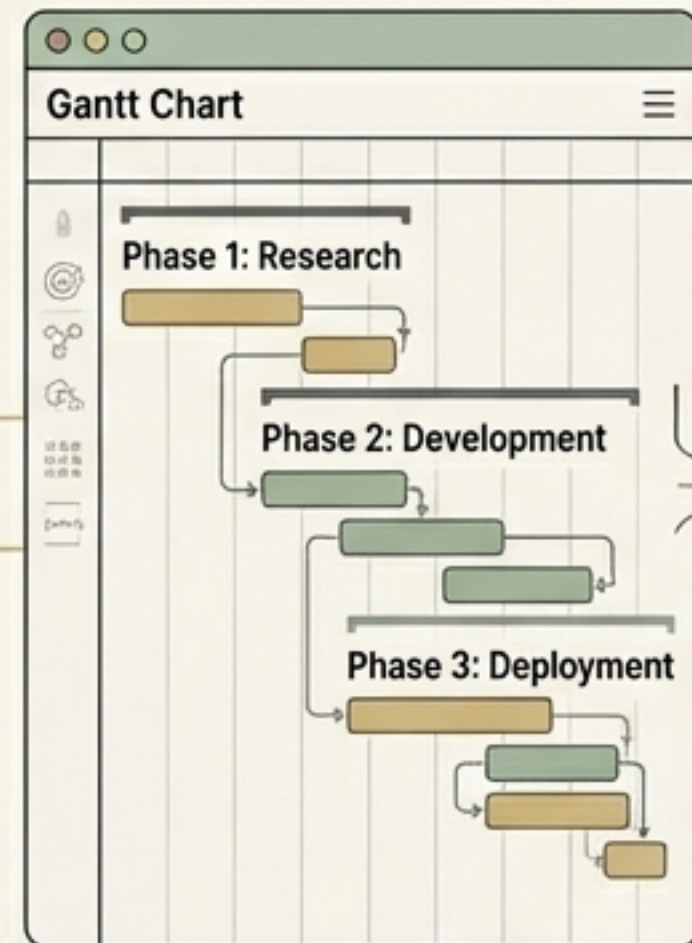
Pillar I: Agentic AI & Systems

From Gantt Chart to Gemini

The Death of the Chatbot

Moving from passively chatting with AI to actively managing AI.

Treating LLMs not as search engines, but as autonomous project managers.



AI Prompt

AGENT: Analyzing project scope...

- Detected dependencies. Initiating task breakdown for "Solomon's Spirits" application.

USER: Confirm timeline adjustment.

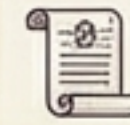
AGENT: Confirmed. Updating Gantt chart...

- Gemini 1.5 Pro engaged for code generation.

PMP-Certified Prompting

Applying elite scope management to AI development.

Building custom ecosystems rather than relying on standard interfaces.

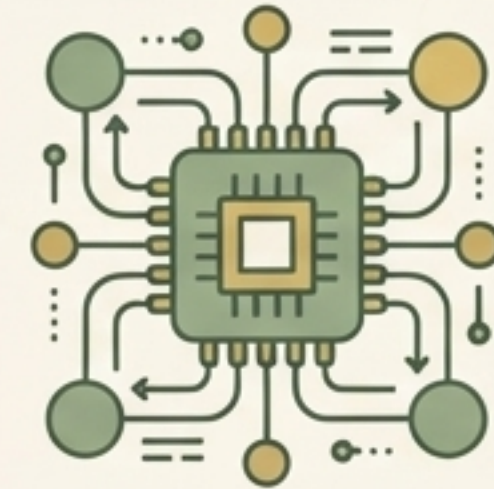


>_

> The Output: Over 30 custom applications deployed (e.g., Solomon's Spirits, Planetary Hour) that blend elite utility with esoteric research.

The Algorithm vs. The Oracle

Can a chatbot truly replace a Tarot deck? No. They are two halves of a complete diagnostic system.



The Tool	Traditional Tarot Deck	Generative AI (Google Gemini)
Core Focus	Intuition & The Subconscious	Knowledge & Synthesis
Nature of Interface	Tactile, visual, and symbolic	Intellectual, vast, and conversational
Brain Hemisphere	Right-brain	Left-brain
The Role	The Mirror (Forces the user to do the deep interpretive work)	The Collaborator (Synthesizes external information for the user)

Pillar II: Esotericism & The Occult

Reclaiming ancient systems of meaning in a chaotic, modern world.

Christian Witchcraft:
Reconciling faith with magical practice. Re-enchanting scripture, elevating the Divine Feminine, and healing religious trauma through reclaimed autonomy.

Gnosticism:
Investigating the Demiurge, the Archons, and the concept of reality as a cosmic prison or simulation.



Hermeticism & Qabalah:
Understanding the As Above, So Below mechanics of the universe and exploring the Tree of Life.

Magic is not a rejection of logic; it is a system of empowerment and a search for pattern in the static.

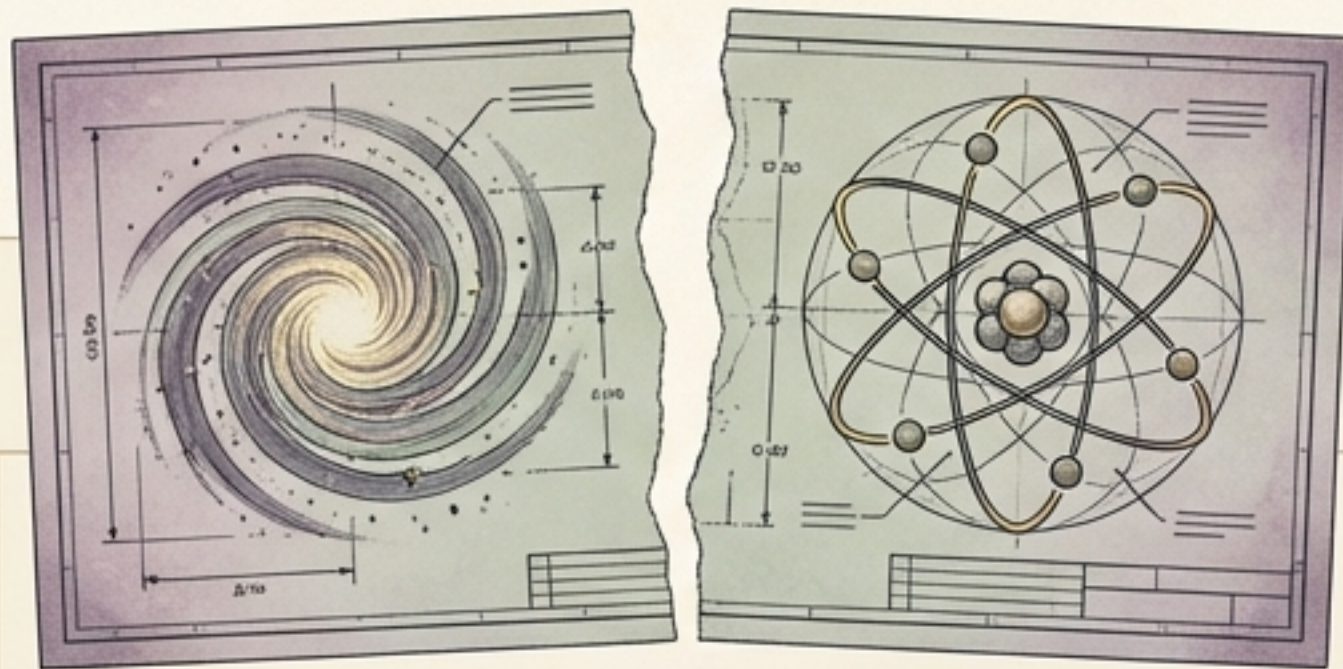
The Cosmic Content Schedule

Aligning digital output with planetary correspondences.



Pillar III: Quantum Science as Metaphor

General Relativity: The rulebook for the very big (stars, gravity).

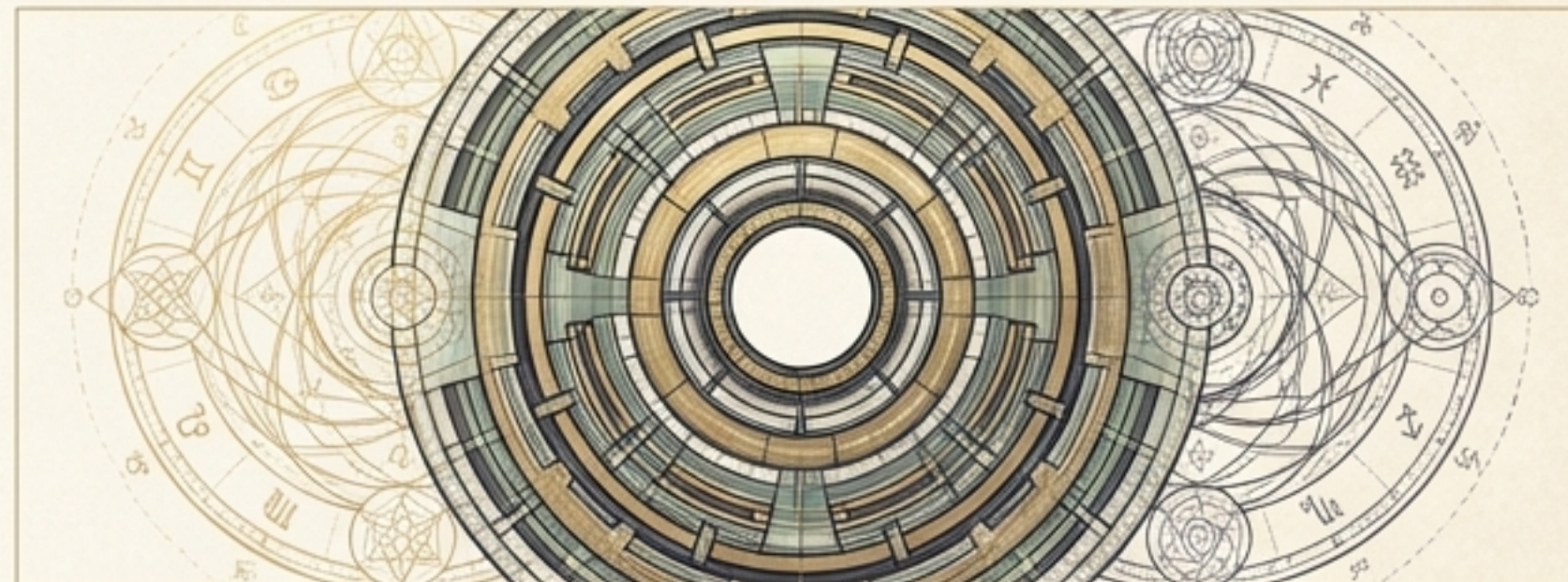


Quantum Mechanics: The rulebook for the very small (atoms, quarks).

They mathematically contradict each other—proving our understanding of reality is fundamentally incomplete.



The Entangled Enigma: Using quantum entanglement (spooky action at a distance) as a profound, scientific metaphor for love and human connection.



CERN & The Cosmic Code: Viewing the particle smasher as humanity's ultimate philosophical tool for asking, "Are there other realities interwoven with our own?"

Pillar IV: Pop Culture as Modern Mythology

Pop culture is how the modern world processes esoteric fear, spiritual hunger, and complex tech anxiety.



Superheroes as Pantheon


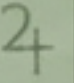
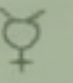

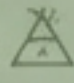

Marvel and DC are our modern Greek Gods, allowing us to project our values onto figures like the God of Thunder or the Sorcerer Supreme.

The Retail Ritual

How consumerism packaged and sold spirituality to the masses. The shift from complex ceremonial magic to witchy fashion aesthetics, AI astrology apps, and the TikTok-ification of Angel Numbers.

The Occult Taxonomy of Horror

Horror films aren't just jump scares; they are cautionary tales about breaking metaphysical laws.

 Film 	 Magical Trope 	 Metaphysical Fear 
The Evil Dead	The Forbidden Grimoire (Naturom Demonto)	Accidental Transgression: The terror of forbidden knowledge; the ultimate "I messed around and found out."
The Exorcist	The Rules of Possession	Loss of Autonomy: A spiritual hostile takeover with legalistic rules. The demon Pazuzu claims squatter's rights on the soul.
Hereditary	Ceremonial Summoning	Fatalism: The chilling realization that free will is an illusion, and the characters are just ingredients in an intergenerational spell to seat King Paimon.

The Synthesis: Digital Karma & The Modern Goetia

Technology and Magic are currently facing the exact same ethical and existential dilemmas.

The Modern Goetia

We are a global coven of digital sorcerers summoning non-human intelligences (LLMs).

Ancient sorcerers approached these entities with extreme caution, protective circles, and exact syntax. Modern users use blind, utopian faith.



Digital Karma

Algorithmic bias isn't just a coding error; it is a structural curse or shadow self we are unwittingly programming into our creations.

Artifacts of the Techno-Mage

The magic is in the manifestation. Tangible outputs from the Silicon Altar.

Custom AI Apps (GitHub Repo)

Showcasing Solomon's Spirits, Planetary Hour calculator, and Gemini Project Planners built in Google AI Studio.

Research Papers

Deep-dive academic explorations such as 'Quantum Mechanics Meets Magic' and 'Researching Italian Giallo Horror Films'.

Artwork

High-end canvas prints bridging the digital and physical, bringing conceptual art to life via AI Studio.



The Techno-Mage does not just theorize; she builds.

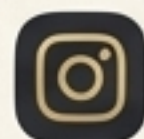
Step Into the Circle

“Whether we are analyzing angel numbers or analyzing algorithms, we are all looking for the exact same thing: connection, meaning, and a way to understand the universe.”



www.nicoleexplainsitall.blog

Read, Subscribe, and Support the digital grimoire.



/nicoleexplains

Contact: nicole@nicoleexplainsitall.blog